

2021 Retail Choice Enrollment and Drop Deadlines

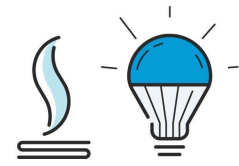
The 2021 Retail Choice Electric and Gas Enrollment and Drop Deadlines can be found on Page 3 of this newsletter.

Below is a summary of the Retail Choice Enrollment and Drop Guidelines:

Electric enrollment and drop requests must be submitted by 4:30 pm EST, at least 5 business days prior to the next scheduled meter reading cycle day. Electric enrollment and drop requests that are submitted on time will take effect 1 day after the next scheduled meter reading cycle day. Otherwise, the effective start or end date will occur 1 day after the following cycle date.

Gas enrollments and drops requests must be submitted by 4:30 pm EST, at least 10 business days prior to the 1st of the next month. Gas enrollment requests that are submitted on time will take effect on the 1st of the next month. Otherwise, the effective start date will occur the 1st of the next to next month. Gas drop requests that are submitted on time will take effect on the last day of the current month. Otherwise, the effective end date will occur on the last day of the next month.

The 2021 Meter Reading Schedule Cycle along with a List of 2021 Holidays can be found on Page 2 of this newsletter.



The [2021 Meter Reading Schedule Cycle](#) can be found here:

<https://www.coned.com/-/media/files/coned/documents/business-partners/become-energy-service-companypartner/service-territory/meter-reading-schedule.pdf>

List of 2021 Holidays, which do not count as Business Days:

1. New Year's Day 1/1/2021
2. Martin Luther King Jr.'s Birthday 1/20/2021
3. Presidents' Day 2/17/2021
4. Memorial Day 5/25/2021
5. Independence Day 7/3/2021
6. Labor Day 9/7/2021
7. Columbus Day 10/12/2021
8. Veterans' Day 11/11/2021
9. Thanksgiving Day 11/26/2021
10. Day after Thanksgiving 11/27/2021
11. Christmas Day 12/25/2021

Contact Us

If you have any questions or comments, please [visit our ESCO website](#) or email RetailAccess@coned.com.