

## **SECTION XIII**

### **STANDARD SERVICE LAYOUTS**

#### **1. GENERAL**

The Standard Service Layouts found on the following pages, reflect generally accepted designs which may be used to plan work and prepare Contractor Work Requests. Please note that these layouts are supplied for reference purposes only. Con Edison must be notified before work is started to ensure the timely installation of the requested service.

Upon receipt of your Contractor Work Request, we will review the Standard Service Layout Plan selected, and return either an approved copy of your Contractor Work Request or a Service Layout identifying the service characteristics and the point of service termination.

Standard Service Layouts for new 1, 2 and 3 family homes are found on pages 44, 44(A), 45, 45(B), 45(C), 46, 46(B), and 46(C) while layouts for new commercial buildings are shown on pages 47, 47(A), and 48 (A). These layouts may also be applicable to existing premises which meet the criteria provided on page 49.

In areas where the Con Edison supplies gas and electricity, it is the responsibility of the contractor to plan his work so that the company's gas and underground electric services may be installed in a common trench at the franchise area.

All work shall be done in accordance with Con Edison's requirements and the customer will obtain all necessary approvals from authorities having jurisdiction before service will be supplied. Con Edison requires a minimum of 48 hours notice to arrange for the inspection of service conduits in a trench and for final inspection.

In a new development, electric mains will not be installed prior to the installation of sewer and water mains. The roadway and the area between the property line and the curb line must be graded within 6-inches of final grade. Sidewalks should not be installed until after service cable or conduit installation by Con Edison is completed.

Con Edison will furnish service cables between customer's meter equipment and property line in accordance with established practice for one, two and three family-homes installed and maintained by the company.

Individually prepared Service Layouts will continue to be provided by Con Edison for large commercial buildings, etc., and all installations not covered by the Standard Service Layouts.

The following code designations are found on the Standard Service Layouts:

C/L - Curb Line

P/L - Property Line

S/S - Service Switch

(alt/loc) - Alternate Location

**GUIDELINES FOR THE INSTALLATION OF ELECTRIC SERVICE  
LATERALS TO RESIDENTIAL DWELLINGS**

Con Edison will supply a separate service lateral to each house in the following three instances:

- All detached houses
- 1, 2 and 3 family semi-attached homes
- 1, 2 and 3 family attached homes

In all other circumstances, Con Edison will supply an individual service lateral from the company facilities to the property line for each 2 hour rated firewall enclosure.

**NEW DETACHED HOMES (Underground)-ONE, TWO AND THREE FAMILY HOMES**

**NOT APPLICABLE IF BUILDING LINE IS 200 FEET OR MORE FROM THE PROPERTY LINE  
(WORK BY CUSTOMER)**

**UNDERGROUND SERVICE CHARACTERISTICS**

**1 Phase, 3-Wire, 120/240-Volts or 3-Wire, 120/208-Volts**

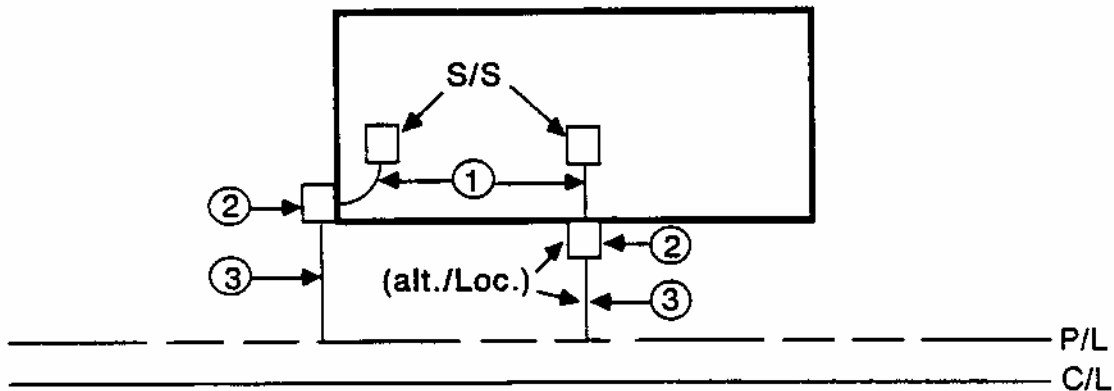
ITEM	DESCRIPTION	SPECIFICATION NO.	PAGE
1	Code Size Conduit and Wires		
2	3-Wire Meter Equipment	394	80
3*	Service conduit – 2 inch minimum		

\*Unless Local Ordinance Does Not Require conduit

THE FINAL LIVE ELECTRIC SERVICE CONNECTION IS TO BE MADE BY THE CONTRACTOR. AN APPROVED CONNECTOR MUST BE USED AND IS OBTAINED FROM LOCAL CON EDISON ENERGY SERVICES OFFICE.

THERE IS NO CHARGE TO THE CUSTOMER OR CONTRACTOR FOR INSPECTION OF SERVICE.

**PLAN A**



**NEW DETACHED HOMES (Overhead) - ONE, TWO AND THREE FAMILY HOMES**

**NOT APPLICABLE WHERE CON EDISON'S SERVICE LATERAL EXCEEDS  
125 FEET IN LENGTH**

**(WORK BY CUSTOMER)**

**OVERHEAD SERVICE CHARACTERISTICS**

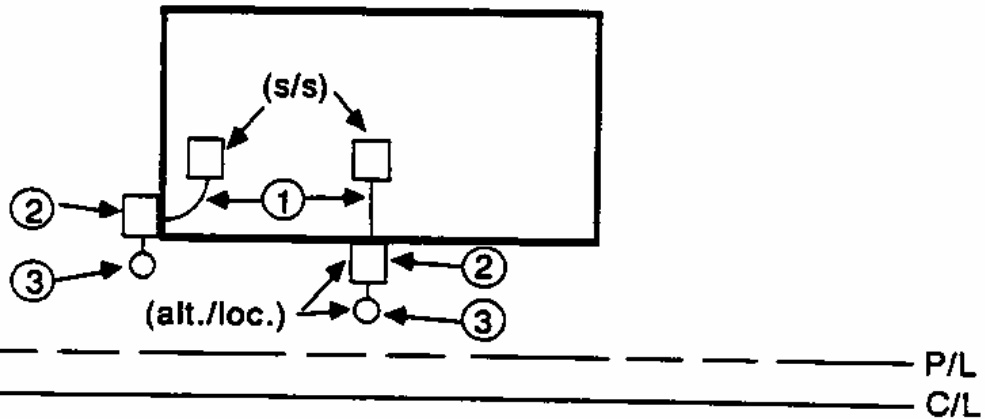
**1 Phase, 3-Wire, 120/240-Volts or 3-Wire, 120/208-Volts**

ITEM	DESCRIPTION	SPECIFICATION NO.	PAGE
1	Code Size Conduit and Wires		
2	3-Wire Meter Equipment	394	80
3	Weatherhead and Standpipe	6218-B and 8746-B	77,78A & B

THE FINAL LIVE ELECTRIC SERVICE CONNECTION IS TO BE MADE BY THE CONTRACTOR USING AN APPROVED CONNECTOR OBTAINED FROM CON EDISON, AT LOCAL ENERGY SERVICES OFFICE.

THERE IS NO CHARGE TO THE CUSTOMER OR CONTRACTOR FOR INSPECTION OF SERVICE.

**PLAN A**



**NEW SEMI-ATTACHED HOMES (Underground) - ONE FAMILY HOMES**

**NOT APPLICABLE IF BUILDING LINE IS 200 FEET OR MORE FROM THE PROPERTY LINE  
(WORK BY CUSTOMER)**

**UNDERGROUND SERVICE CHARACTERISTICS**

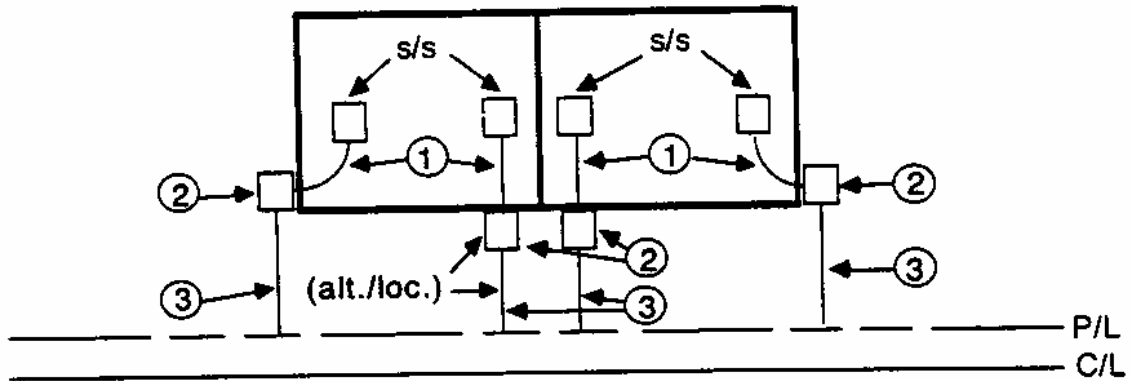
**1 Phase, 3-Wire, 120/240-Volts or 3-Wire, 120/208-Volts**

ITEM	DESCRIPTION	SPECIFICATION NO.	PAGE
1	Code Size Conduit and Wires		
2	3-Wire Meter Equipment	394	80
3*	Service Conduit 2-inch Minimum		

\*Unless Local Ordinance Does Not Require Conduit

THE FINAL LIVE ELECTRIC SERVICE CONNECTION IS TO BE MADE BY CON EDISON.  
THERE IS NO CHARGE TO THE CUSTOMER OR CONTRACTOR FOR  
INSPECTION OF SERVICE.

**PLAN A**



PAGE REMOVED  
RESERVE FOR FUTURE USE

**NEW SEMI-ATTACHED HOMES (Overhead) - ONE FAMILY HOMES**

**NOT APPLICABLE WHERE CON EDISON'S SERVICE LATERAL EXCEEDS  
125 FEET IN LENGTH**

**(WORK BY CUSTOMER)**

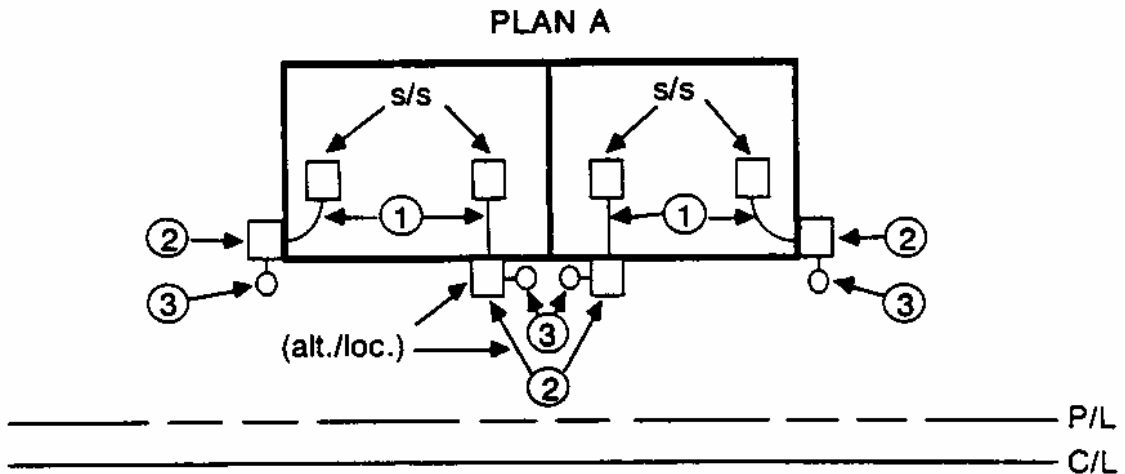
**OVERHEAD SERVICE CHARACTERISTICS**

**1 Phase, 3-Wire, 120/240-Volts - or - 3-Wire, 120/208-Volts**

ITEM	DESCRIPTION	SPECIFICATION NO.	PAGE
1	Code Size Conduit and Wires		
2	3-Wire Meter Equipment	394	80
3	Weatherhead and Standpipe	6218 and 8746	77,78A & B

THE FINAL LIVE ELECTRIC SERVICE CONNECTION IS TO BE MADE BY THE CONTRACTOR. AN APPROVED CONNECTOR MUST BE USED AND CAN BE OBTAINED FROM LOCAL CON EDISON ENERGY SERVICES OFFICE.

THERE IS NO CHARGE TO THE CUSTOMER OR CONTRACTOR FOR INSPECTION OF SERVICE.





**NEW SEMI-ATTACHED HOMES (Overhead) - TWO AND THREE FAMILY HOMES**

**NOT APPLICABLE WHERE CON EDISON'S SERVICE LATERAL EXCEEDS  
125 FEET IN LENGTH**

**(WORK BY CUSTOMER)**

**OVERHEAD SERVICE CHARACTERISTICS**

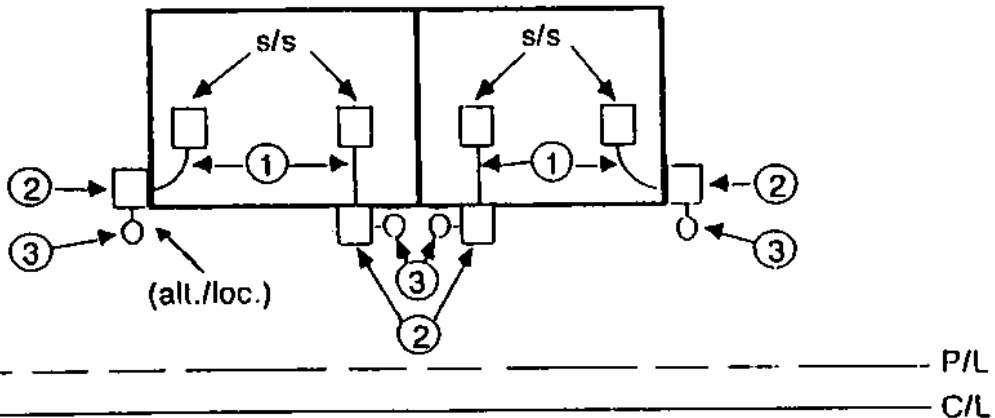
**1 Phase, 3-Wire, 120/240-Volts - or - 3-Wire, 120/208-Volts**

ITEM	DESCRIPTION	SPECIFICATION NO.	PAGE
1	Code Size Conduit and Wires		
2	3-Wire Meter Equipment	394	80
3	Weatherhead and Standpipe	6218 and 8746	77,78A & B

THE FINAL LIVE ELECTRIC SERVICE CONNECTION IS TO BE MADE BY THE CONTRACTOR. AN APPROVED CONNECTOR MUST BE USED AND CAN BE OBTAINED FROM LOCAL CON EDISON ENERGY SERVICES OFFICE.

THERE IS NO CHARGE TO THE CUSTOMER OR CONTRACTOR FOR INSPECTION OF SERVICE.

**PLAN A**



**NEW ATTACHED/ROW HOMES (*Underground*) - ONE FAMILY HOMES**

**NOT APPLICABLE IF BUILDING LINE IS 200 FEET OR MORE FROM THE PROPERTY LINE  
(WORK BY CUSTOMER)**

**UNDERGROUND SERVICE CHARACTERISTICS**

**1 Phase, 3-Wire, 120/240-Volts or 3-Wire, 120/208-Volts**

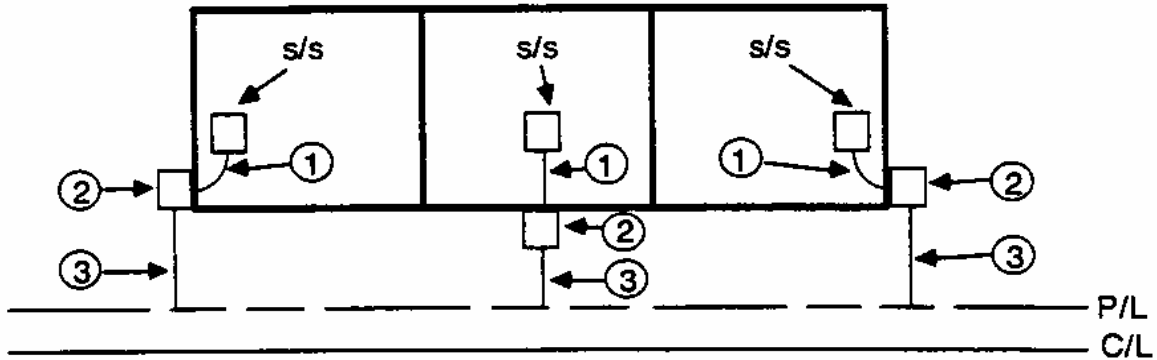
ITEM	DESCRIPTION	SPECIFICATION NO.	PAGE
1	Code Size Conduit and Wires		
2	3-Wire Meter Equipment	394	80
3*	Service Conduit 2-inch minimum		

\*Unless Local Ordinance Does Not Require Conduit

THE FINAL LIVE ELECTRIC SERVICE CONNECTION IS TO BE MADE BY CON EDISON.

THERE IS NO CHARGE TO THE CUSTOMER OR CONTRACTOR FOR INSPECTION OF SERVICE.

**PLAN A**



PAGE REMOVED  
RESERVICE FOR FUTURE USE

**NEW ATTACHED/ONE FAMILY ROW HOMES (Overhead)**

**NOT APPLICABLE WHERE CON EDISON'S SERVICE LATERAL  
EXCEED 125 FEET IN LENGTH**

**(WORK BY CUSTOMER)**

**OVERHEAD SERVICE CHARACTERISTICS**

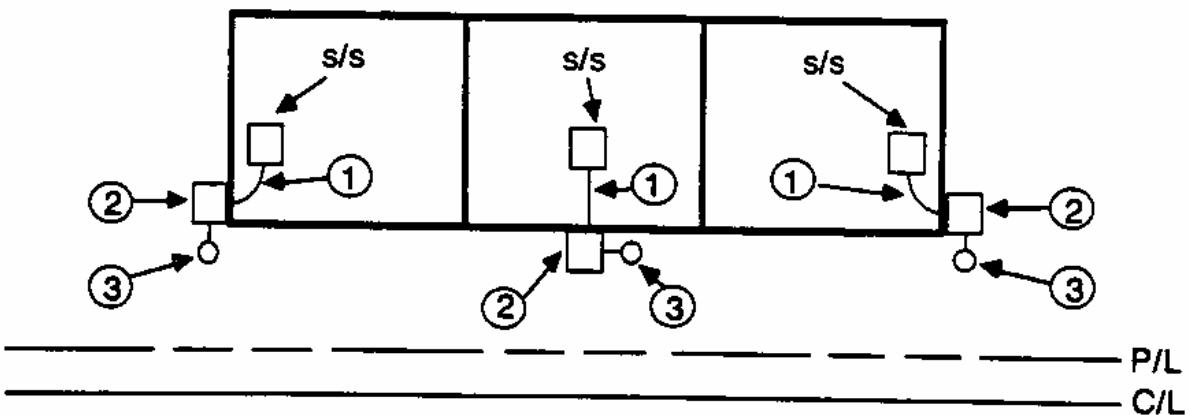
**1 Phase, 3-Wire, 120/240-Volts or 3-Wire, 120/208-Volts**

ITEM	DESCRIPTION	SPECIFICATION NO.	PAGE
1	Code Size Conduit and Wires		
2	3-Wire Meter Equipment	394	80
3	Weatherhead and Standpipe	6218 and 8746	77,78A & B

THE FINAL LIVE ELECTRIC SERVICE CONNECTION IS TO BE MADE BY CONTRACTOR. AN APPROVED CONNECTOR MUST BE USED AND OBTAINED FROM LOCAL CON EDISON ENERGY SERVICES OFFICE.

THERE IS NO CHARGE TO THE CUSTOMER OR CONTRACTOR FOR INSPECTION OF SERVICE.

**PLAN A**



**NEW ATTACHED/ROW HOMES (Overhead) - ONE, TWO AND THREE FAMILY HOMES**

**NOT APPLICABLE WHERE CON EDISON'S SERVICE LATERAL EXCEED 125 FEET IN LENGTH**

**(WORK BY CUSTOMER)**

**OVERHEAD SERVICE CHARACTERISTICS**

**1 Phase, 3-Wire, 120/240-Volts or 3-Wire, 120/208-Volts**

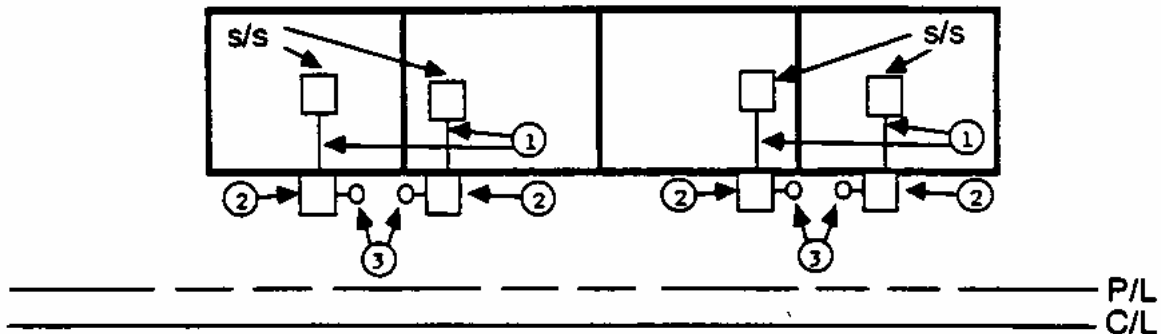
ITEM	DESCRIPTION	SPECIFICATION NO.	PAGE
1	Code Size Conduit and Wires		
2	3-Wire Meter Equipment	394	80
3	Weatherhead and Standpipe	6218 and 8746	77,78A & B

Note: Con Edison will supply a single service lateral to every 2 hour firewall. If a 2 hour firewall exists between every unit, shown below, then a single service lateral will be supplied to every two footprint units.

THE FINAL LIVE ELECTRIC SERVICE CONNECTION IS TO BE MADE BY CONTRACTOR. AN APPROVED CONNECTOR MUST BE USED AND OBTAINED FROM LOCAL CON EDISON ENERGY SERVICES OFFICE.

THERE IS NO CHARGE TO THE CUSTOMER OR CONTRACTOR FOR INSPECTION OF SERVICE.

**PLAN A**



**LAYOUT FOR NEW SMALL COMMERCIAL BUILDINGS (*Underground*)**

**NOT APPLICABLE IF BUILDING LINE IS 200 FEET OR MORE FROM THE PROPERTY LINE**

**(WORK BY CUSTOMER)**

**UNDERGROUND SERVICE CHARACTERISTICS**

**1 Phase, 3-Wire, 120/240-Volts**  
 or  
**3-Wire, 120/208-Volts**  
 or  
**3 Phase, 4-Wire, 120/208-Volts**

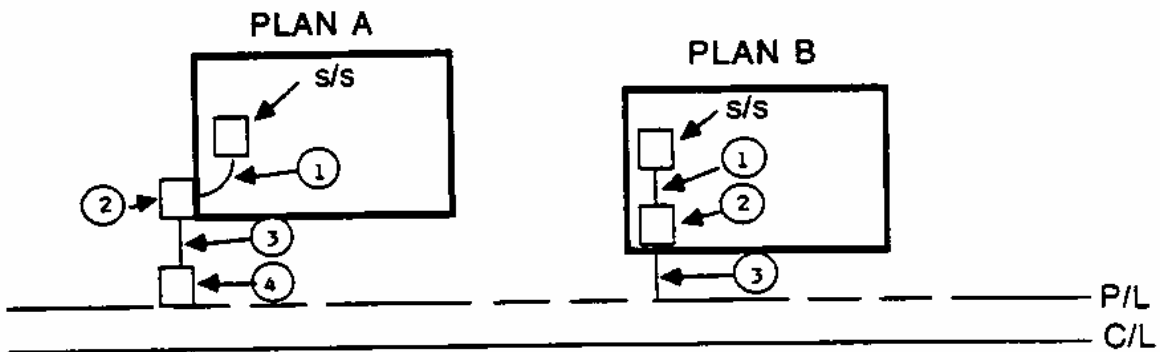
ITEM	DESCRIPTION	SPECIFICATION NO.	PAGE
1	Code Size Conduit and Wires		
2	Meter Equipment	See Notes	Below
3*	Service Conduit – 2-inch minimum		
4**	Property Line Box	6210	62

\* Unless Local Ordinance Does Not Require Conduit

\*\* Not required if Building Line is within 5 feet of the Property Line. If a property line box is not required, install a service end box per specification 6208, 6209, 6211, 6212, 6214, or 6215.

- Notes 1. For 3-wire service use Spec. 394 and/or 395. For 4-wire service, use Spec.194.  
 2. Service size for individual customer is limited to 200 amperes.

THE FINAL LIVE ELECTRIC SERVICE CONNECTION IS TO BE MADE BY CON EDISON.  
 THERE IS NO CHARGE TO THE CUSTOMER OR CONTRACTOR FOR INSPECTION OF SERVICE.



LAYOUT FOR NEW SMALL COMMERCIAL BUILDINGS (*Overhead*)

NOT APPLICABLE WHERE CON EDISON'S SERVICE LATERAL  
EXCEEDS 125 FEET IN LENGTH

(WORK BY CUSTOMER)

OVERHEAD SERVICE CHARACTERISTICS

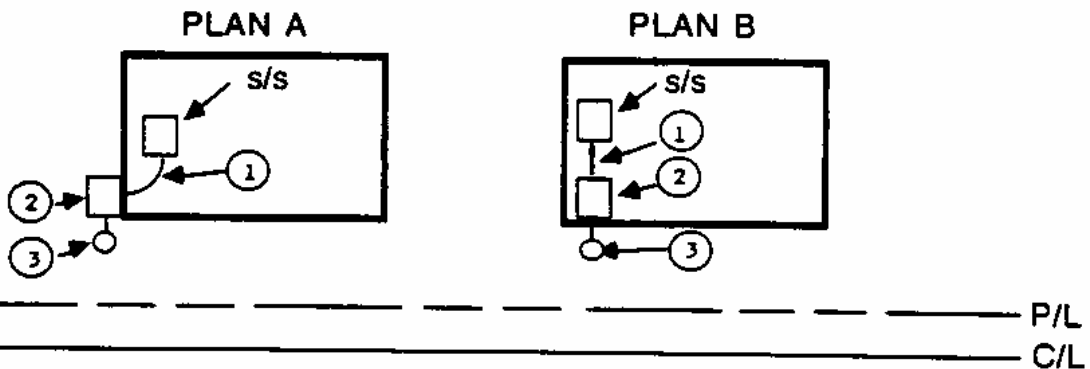
1 Phase, 3-Wire, 120/240-Volts  
or  
3-Wire, 120/208-Volts  
or  
3 Phase, 4-Wire, 120/208-Volts

ITEM	DESCRIPTION	SPECIFICATION NO.	PAGE
1	Code Size Conduit and Wires		
2	Meter Equipment	See Notes	Below
3	Weatherhead and Standpipe	6218 and 8746	77,78A & B

- Notes 1. For 3-wire service use Spec 394 and/or 395. For 4-wire service use Spec.194.  
2. Service size for individual customer is limited to 200 amperes.

THE FINAL LIVE ELECTRIC SERVICE CONNECTION IS TO BE MADE BY CONTRACTOR.  
AN APPROVED CONNECTOR MUST BE USED AND OBTAINED FROM LOCAL CON  
EDISON ENERGY SERVICES OFFICE.

THERE IS NO CHARGE TO THE CUSTOMER OR CONTRACTOR FOR  
INSPECTION OF SERVICE.



PAGE REMOVED  
RESERVE FOR FUTURE USE



**NEW MULTI-TENANTED RESIDENTIAL BUILDING DIRECT METERED (Overhead)**

**NOT APPLICABLE WHERE CON EDISON'S SERVICE LATERAL  
EXCEEDS 125 FEET IN LENGTH**

**(WORK BY CUSTOMER)**

**OVERHEAD SERVICE CHARACTERISTICS**

**1 Phase, 3-Wire, 120/240-Volts  
or  
3-Wire, 120/208-Volts  
or  
3 Phase, 4-Wire, 120/208-Volts**

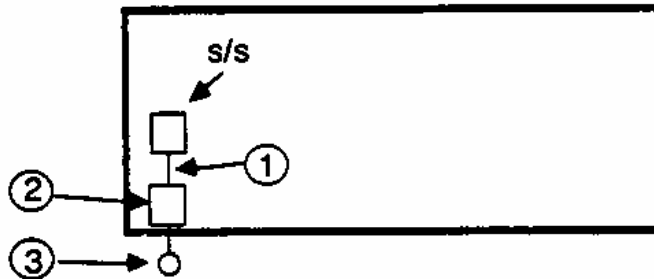
ITEM	DESCRIPTION	SPECIFICATION NO.	PAGE
1	Code Size Conduit and Wires		
2	Meter Equipment	447	82
3	Weatherhead and Standpipe	6218 and 8746	77,78A & B

- Notes
- When there are more than six meters, the main service disconnect will be on the line side of the meter equipment.
  - Separate service switch(s) and appropriate meter equipment(s) may be required for owners and/or other non-residential load.

THE FINAL LIVE ELECTRIC SERVICE CONNECTION IS TO BE MADE BY CONTRACTOR. AN APPROVED CONNECTOR MUST BE USED AND OBTAINED FROM LOCAL ENERGY SERVICES OFFICE.

THERE IS NO CHARGE TO THE CUSTOMER OR CONTRACTOR FOR INSPECTION OF SERVICE.

**PLAN A**



----- P/L  
----- C/L

## **REWIRING OF EXISTING PREMISES**

The Standard Service Layouts are applicable for the rewiring of existing 1, 2, and 3 family homes, small commercial buildings, and multi-tenanted residential buildings due to load growth, when all of the following criteria are met:

- a) No change in the point of service termination or point of service entrance is required.
- b) Existing service conduits are of an adequate size.
- c) The new service will be single phase 3-wire 120/240-volts; 3-wire, 120/208-volts; or three phase 4-wire, 120/208-volts.
- d) The service capacity for individual commercial customers is limited to 200 amperes.

Contractors are reminded that **NO FLAT CONNECTIONS ARE PERMITTED** and when appropriate meter change adapters shall be installed and the existing meter wired to the adapter. Con Edison will furnish meter adapters when requested by contractors.

**The disconnection and final connection will be made by the licensed electrical contractor in the case of 1, 2 and 3 family homes that are presently served with overhead service.**

There is no charge to the customer or contractor for inspection of service.