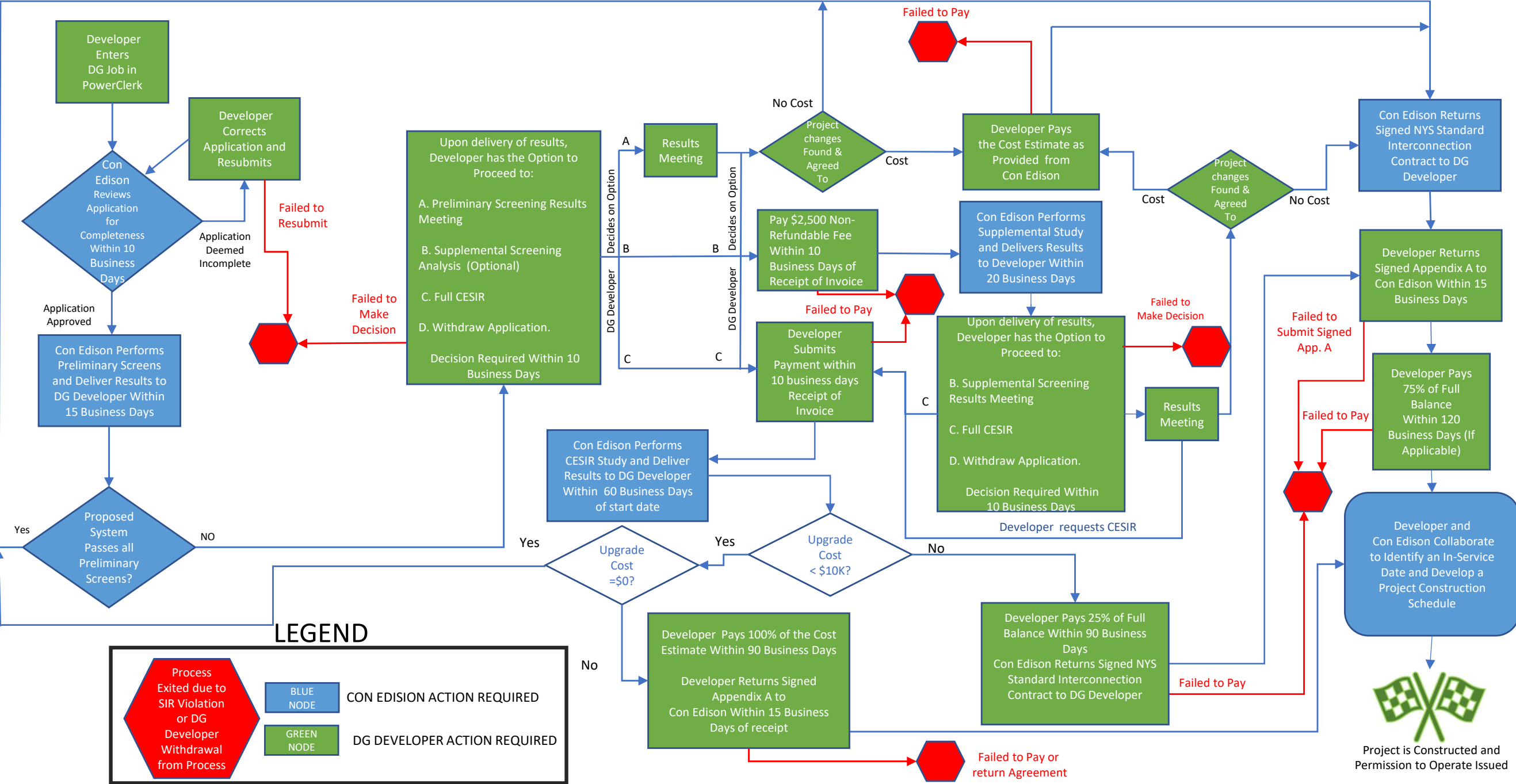
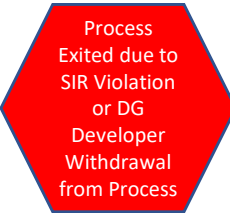

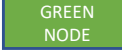


May 2022 NYS SIR – Simplified Process Flow Chart 50kW – 5MW



LEGEND

-  Process Exited due to SIR Violation or DG Developer Withdrawal from Process
-  BLUE NODE CON EDISION ACTION REQUIRED
-  GREEN NODE DG DEVELOPER ACTION REQUIRED



Project is Constructed and Permission to Operate Issued