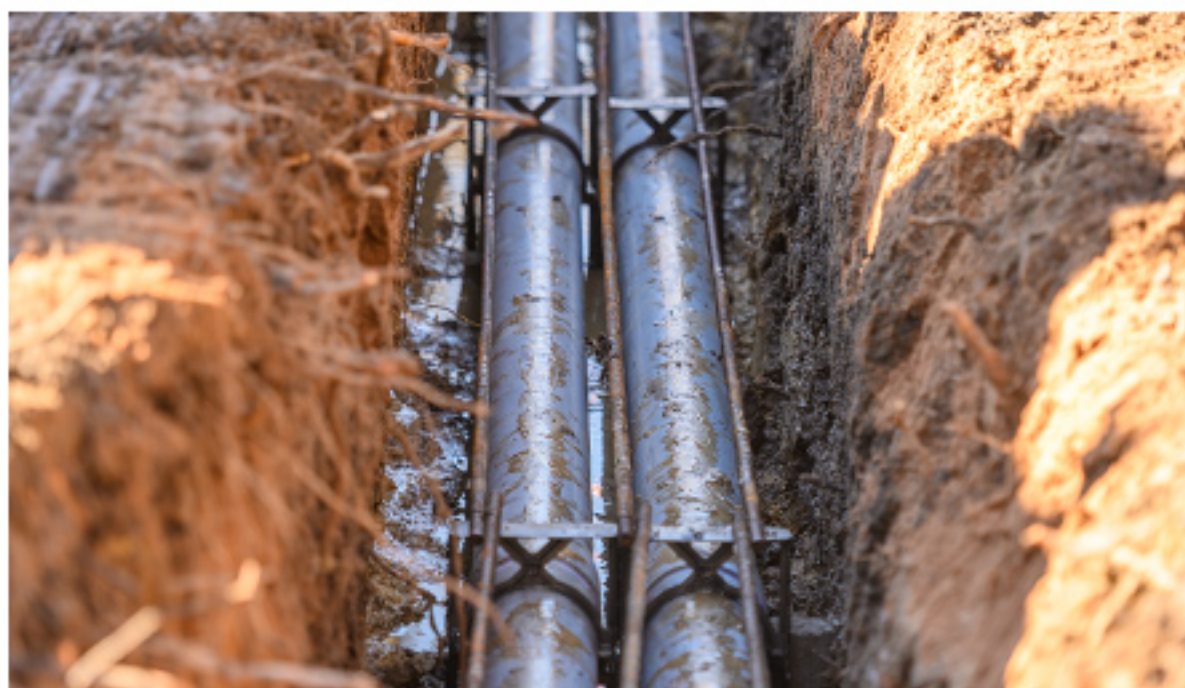


## CUSTOMER CURRENTS



### ROCKLAND ELECTRIC NEWSROOM SPRING 2026

Welcome to the new, quarterly e-newsletter from Rockland Electric Company! We are working tirelessly throughout our service area to continue improving the reliability and resiliency of our energy systems, all while working with our customers to keep their bills affordable.



#### Improving Resiliency in Closter

Rockland Electric Company plans to complete a significant storm hardening project in Closter along Blanch, Herbert and Homans avenues to improve service reliability during extreme weather events. Approximately 4,800 feet of overhead power lines will be placed underground and improve service for over 1,300 customers.

[READ MORE ON ORU.COM](#)



#### Major Upgrades in Montvale

We also recently completed the Montvale Substation upgrade project. The substation is now equipped with higher capacity switchgear and two additional circuits feeding the community. The new switchgear, which houses the circuit breakers, supplies the underground exits that serve the community. The project increases reliability, resiliency, and restoration for over 5,600 customers in the Montvale area.

[READ MORE ON ORU.COM](#)



#### Incentives for EV Owners!

If you're an electric vehicle owner in the Rockland Electric Company service area, we have plenty of incentive opportunities available for you. Since the year started, the company has paid out \$50,000 in incentives through our Charger Ready Program, which makes it affordable for customers to install Level 2 EV chargers at their home by offsetting the costs of charging infrastructure.

[MORE ABOUT CHARGER READY FOR HOME](#)



#### Is Your Home Losing Heat?

Rockland Electric Company has partnered with MyHEAT to help you uncover how much heat your home is losing, and where it's escaping. We offer this free tool to help you save energy and money. Now you can easily access your home's heat loss profile and see the areas of your home that could benefit from upgrades.

[MORE ABOUT MYHEAT](#)